

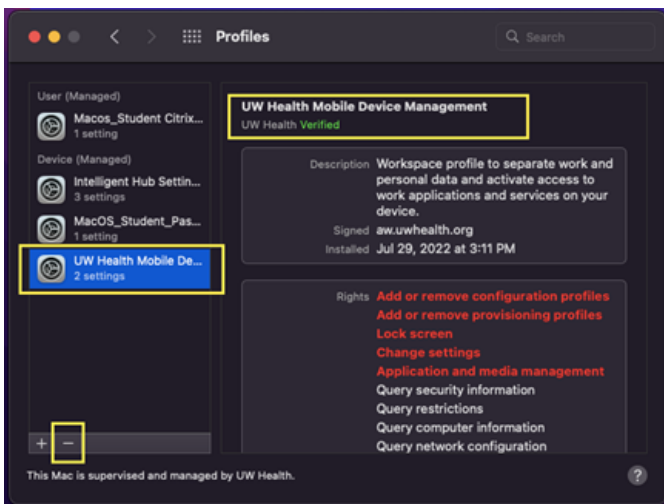
# Student Unenroll Mac from UW Health MDM

This page was moved to [kb.wisc.edu/134293](https://kb.wisc.edu/134293)  
Click in the link above if you are not automatically redirected in 10 seconds.

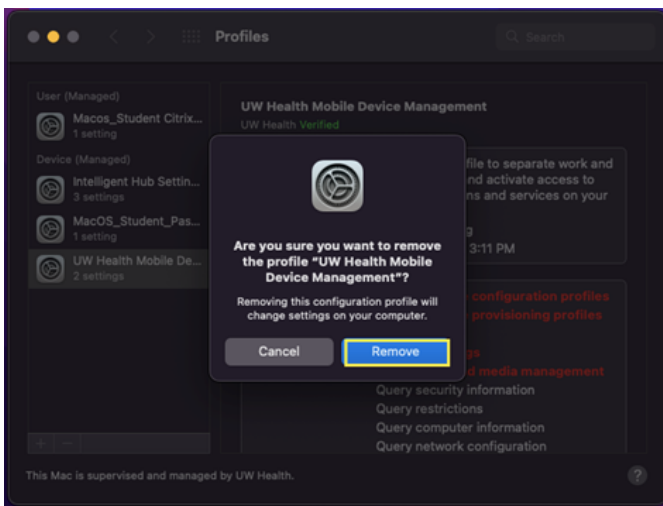
1. Select **System Preferences > Profiles**



2. Find and select the **UW Health Mobile Device Management**
3. Select the **–** button to delete the profile.

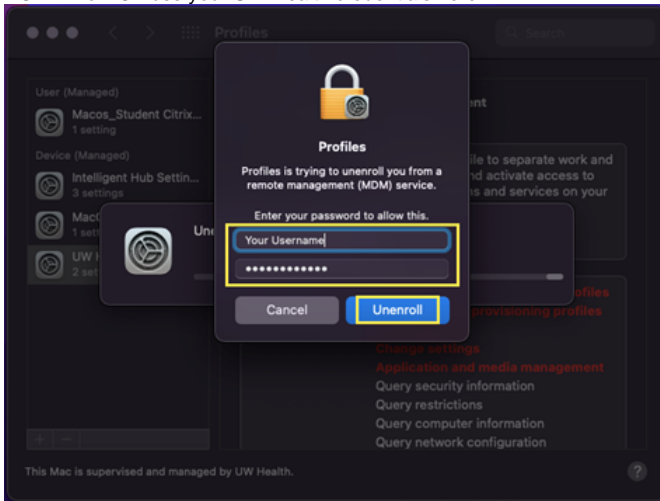


4. Confirm by selecting **Remove**.



5. Enter your **device credentials** and then select **Unenroll**.

**NOTE:** Do NOT use your UW Health credentials here.



6. **Reboot** your device. The Hub should remain installed for you to enroll in another MDM.