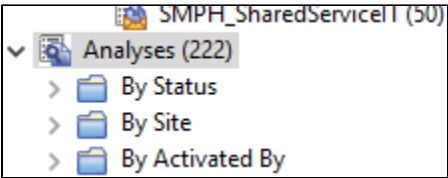


TEM - Check Battery Health

This page was moved to kb.wisc.edu/smph/internal/134057
Click in the link above if you are not automatically redirected in 10 seconds.

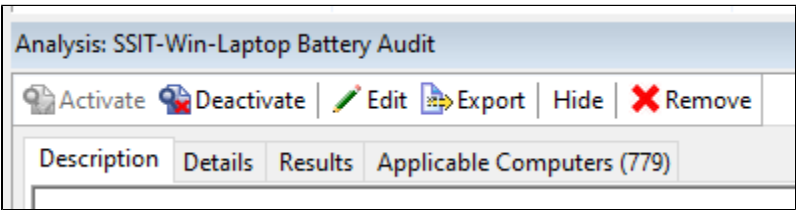
- In TEM go to "Analyses" > Search for Battery



- Select SSIT-Win-Laptop Battery Audit

Status	Name	Site
Activated Locally	SSIT-Win-Laptop Battery Audit	SMPH_SharedServiceIT
Activated Locally	SSIT-OSX-Laptop Battery Audit	SMPH_SharedServiceIT

- At bottom of screen, select "Activate" for the audit to begin.
- This may take some time to populate results



- You can search the listings for the computer name.
- Under "Battery Status" if you see Caution1 or Caution2, it likely means the battery needs to be replaced

