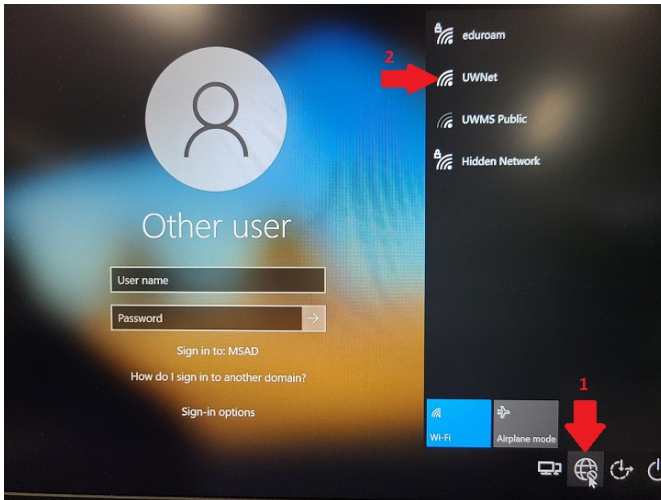


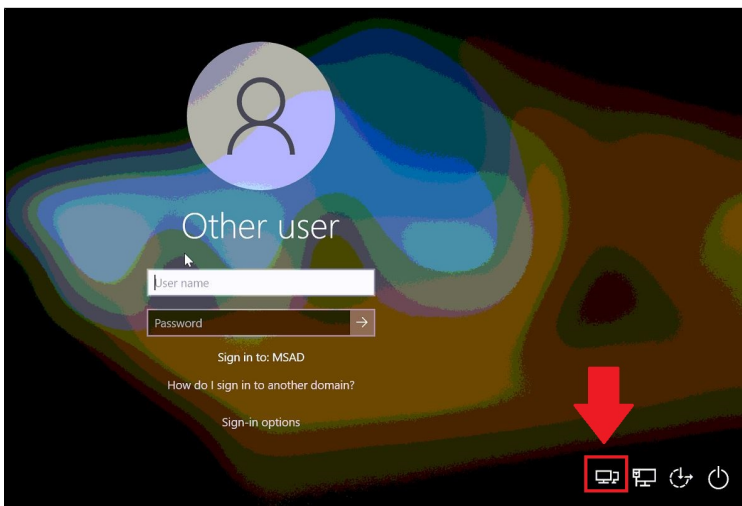
GlobalProtect VPN - Pre-login (Windows OS)

This page was moved to kb.wisc.edu/134209
Click in the link above if you are not automatically redirected in 10 seconds.

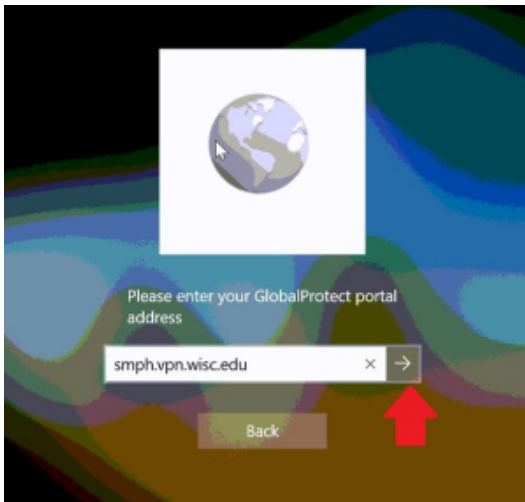
- **Connect to Wi-Fi** by selecting the network icon (1) and then selecting UWNNet (2) and authenticating with NetID and NetID password or preferred network (at home)



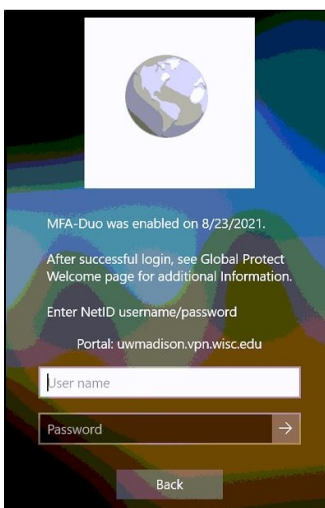
- At the computer **login screen**, select the (bottom right corner) **Double Network icon**.



- Enter the **smph.vpn.wisc.edu** (if it's not already populated)



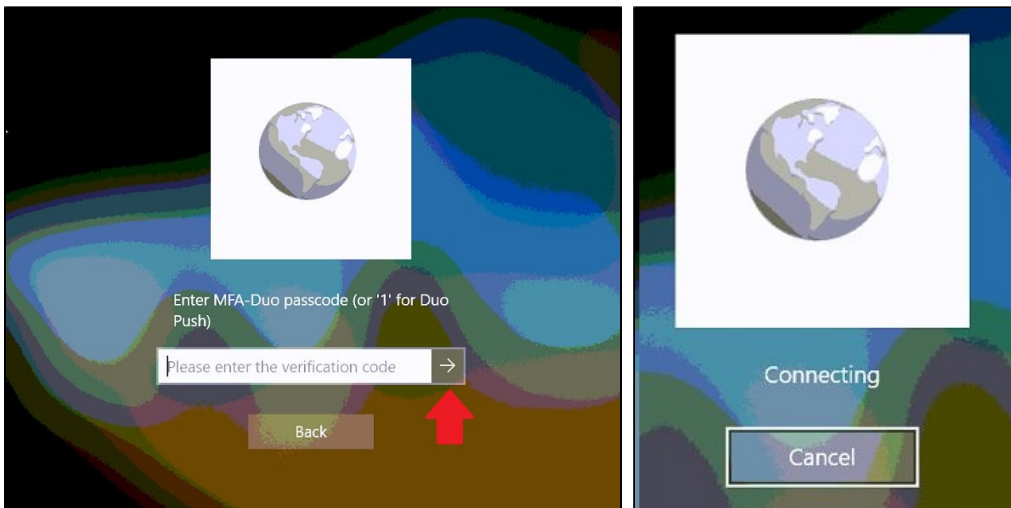
- Enter your UW Campus credentials (**NetID** username and password).



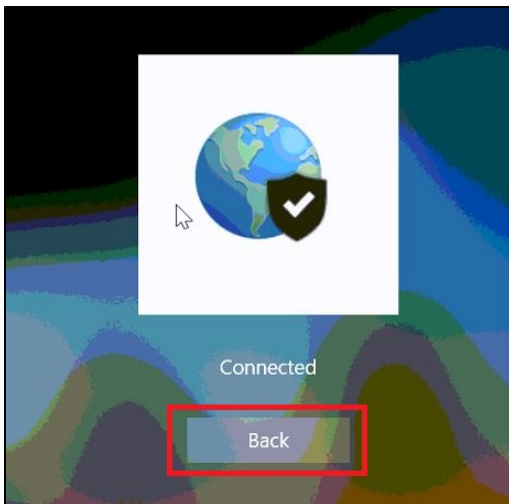
- Next, you will be prompted for **MFA-DUO authentication**.
 - **Enter 1**, to send **push** to phone/mobile device.

OR

- **Enter code**, generated from your Fob, or phone/mobile device.



- Once Connected, click "**Back**" to return to the normal user login window.



- Finally, login with username and password.

Note: If this is a first time login, and you are using a temporary password, you should get prompted to change the password to one of your own choosing.

