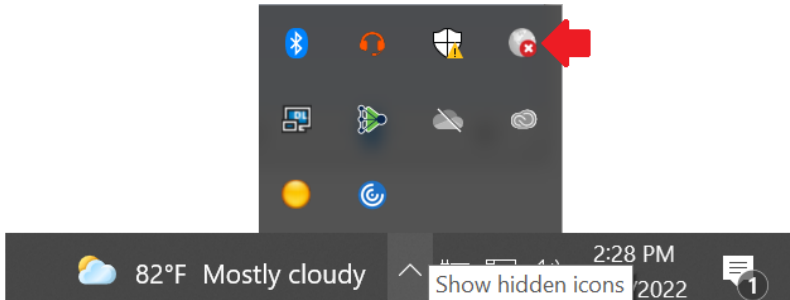


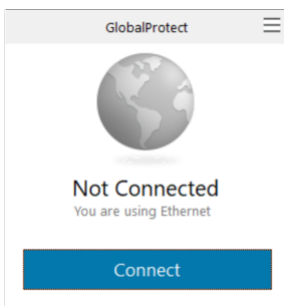
# GlobalProtect - Connecting on Windows PC

This page was moved to [kb.wisc.edu/134161](https://kb.wisc.edu/134161)  
Click in the link above if you are not automatically redirected in 10 seconds.

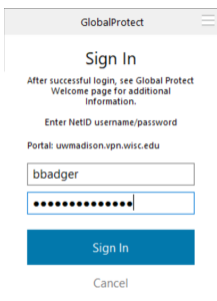
- Click the "Show hidden icons" section (*up arrow, right side of taskbar*) and select the GlobalProtect icon (*white globe symbol*).



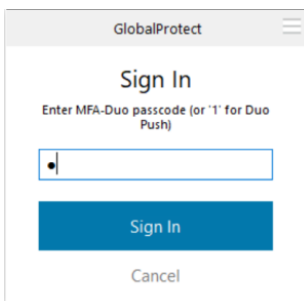
- Click the Connect button.



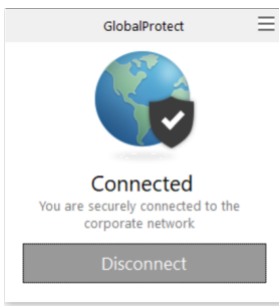
- Enter your NetID Credentials, then click the Sign In button.



- Type in a Fob generated passcode, or enter the number 1 for Duo Push, then click the Sign In button.



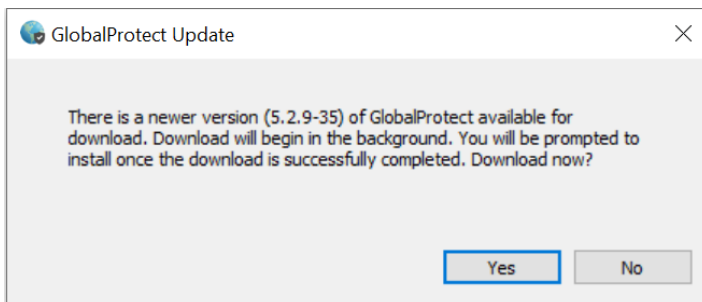
- You should now be connected to the VPN portal.



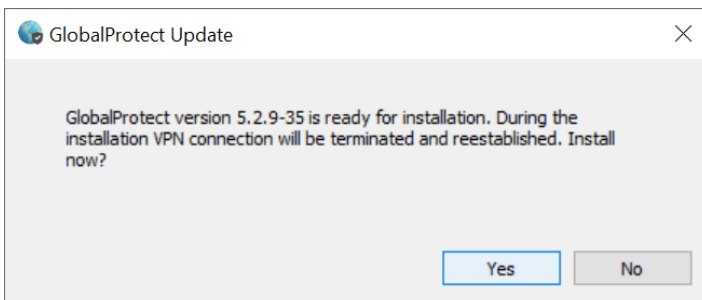
- Check the box next to "Do not show this again", if you'd like to stop the Welcome message from popping up, each time you connect to the VPN.



- IF ? you get prompted for an update, click Yes. (*Short on time? Close window to skip update*)



- After a short pause, you should get another update prompt, click Yes.



- GlobalProtect should now update (*may take a couple minutes*) in the background.
- After the update completes, you will need to login and re-connect the VPN again.

Also see:

GlobalProtect VPN - Switching to the SMPH VPN Portal (Windows OS)  
<https://confluence.med.wisc.edu/x/FwA-B>